



Genetic Traceability of Black Pig Meats Using Microsatellite Markers

Jae-Don Oh^{1,a}, Ki-Duk Song^{1,a}, Joo-Hee Seo¹, Duk-Kyung Kim¹, Sung-Hoon Kim¹, Kang-Seok Seo², Hyun-Tae Lim³, Jae-Bong Lee³, Hwa-Chun Park⁴, Youn-Chul Ryu⁵, Min-Soo Kang⁵, Seoae Cho⁶, Eui-Soo Kim^{1,7}, Ho-Sung Choe⁸, Hong-Sik Kong^{1,*}, and Hak-Kyo Lee^{1,*}

¹ Genomic Informatics Center, Hankyong National University, Anseong 456-649, Korea

ABSTRACT: Pork from Jeju black pig (population J) and Berkshire (population B) has a unique market share in Korea because of their high meat quality. Due to the high demand of this pork, traceability of the pork to its origin is becoming an important part of the consumer demand. To examine the feasibility of such a system, we aim to provide basic genetic information of the two black pig populations and assess the possibility of genetically distinguishing between the two breeds. Muscle samples were collected from slaughter houses in Jeju Island and Namwon, Chonbuk province, Korea, for populations J and B, respectively. In total 800 Jeju black pigs and 351 Berkshires were genotyped at thirteen microsatellite (MS) markers. Analyses on the genetic diversity of the two populations were carried out in the programs MS toolkit and FSTAT. The population structure of the two breeds was determined by a Bayesian clustering method implemented in structure and by a phylogenetic analysis in Phylip. Population J exhibited higher mean number of alleles, expected heterozygosity and observed heterozygosity value, and polymorphism information content, compared to population B. The F_{IS} values of population J and population B were 0.03 and -0.005 , respectively, indicating that little or no inbreeding has occurred. In addition, genetic structure analysis revealed the possibility of gene flow from population B to population J. The expected probability of identify value of the 13 MS markers was 9.87×10^{-14} in population J, 3.17×10^{-9} in population B, and 1.03×10^{-12} in the two populations. The results of this study are useful in distinguishing between the two black pig breeds and can be used as a foundation for further development of DNA markers. (**Key Words:** Black Pig Populations, Genetic Traceability, Heterozygosity, Microsatellite Markers, Probability of Identity)

INTRODUCTION

In Korea, fresh pork is popular for use in a wide variety

* Corresponding Author: Hong-Sik Kong. Tel: +82-31-670-5334, Fax: +82-31-670-5657, E-mail: kebinkhs@hknu.ac.kr / Hak-Kyo Lee. Tel: +82-31-670-5659, Fax: +82-31-670-5662, E-mail: breedlee@empas.com

² Department of Animal Science and Technology, Sunchon National University, Suncheon 540-742, Korea.

³ Institute of Agriculture and Life Sciences, Gyeongsang National University, Jinju 660-701, Korea.

⁴ Dasan Pig Breeding Co., Namwon 590-831, Korea.

⁵ Major of Animal Science and Biotechnology, Jeju National University, Jeju 690-756, Korea.

⁶ C&K Genomics, Seoul 151-919, Korea.

⁷ Department of Animal Science, Iowa State University, Ames, IA 50011, USA.

⁸ Department of Animal Biotechnology, Chonbuk National University, Jeonju 561-756, Korea.

^a Jae-Don Oh and Ki-Duk Song equally contributed to this work.

Submitted Dec. 16, 2013; Revised Mar. 27, 2014; Accepted Apr. 10, 2014

of dishes. With this arises a demand for high quality fresh pork with high marbling. In Japan, the retail price of purebred Berkshire meat is 50% higher than that of regular commercial pork meat (three-way crossbred pigs) (Suzki et al., 2003). Similarly in Korea, black pork, mostly from Berkshire and Jeju Black pig, is sold at a higher price than regular commercial pork.

Previous studies of black pig meat revealed a higher glutamic acid content and higher red muscle fiber content than other commercial breeds. The level of glutamic acid is known to be a major factor in flavor (Moon et al., 2004) while the red muscle fiber content is thought to confer tenderness to the meat (Song et al., 2010). In addition, it was reported that black pig meat, especially from Berkshire, possesses high marbling, drip loss and water holding capacity (Lee et al., 2011). Due to these characteristics, the black pig meat is in high demand in Korea.

Recently, the Korean public has started to pay attention

to the origin of the food it consumes. To provide the consumers with the necessary information, the potential of using DNA-based methods for the identification of meat has been extensively explored (Dalvit et al., 2007; 2008). Several types of DNA markers have been tested for use in traceability systems in livestock, including mitochondrial DNAs (Alves et al., 2009), microsatellites (Kim et al., 2007), and SNPs (Goffaux et al., 2005; Negrini et al., 2008; Shim et al., 2010). A traceability system based on DNA technology has already been enforced for Korean beef since 2009 in Korea. To consider expanding this use of genetic identification system to pork, the Korean government has formed a committee to consider suitable methods for implementing a traceability system. In addition, multiple providers supply the market with black pig meat in Korea and the use of a genetic system to distinguish between different stocks will also enhance the brand power of the suppliers.

With the goal of developing a genetic tool for the identification of pig meat, the objective of this study was to identify markers with sufficient genetic information to discriminate between the two main black pig populations in Korea. A total of 13 microsatellite (MS) markers were tested in Jeju black pig and Berkshire, and levels of genetic diversity in each breed were estimated for future use in breeding.

MATERIALS AND METHODS

Sample collection and DNA extraction

Muscle samples were collected between September of 2012 and April of 2013 from two slaughter houses; one in Jeju Island for population J ($n = 800$) and the in Namwon, Korea, for population B ($n = 351$). Population J is known to have a mixed genetic background with possible cross-breeding with either Duroc or Berkshire and Korean native pig. Population B consists of pure Berkshire breed, which was established in Korea since 2004.

Total genomic DNA was extracted using the salting-out procedures (Miller et al., 1988). DNA quality and quantity were measured with UV-spectrophotometer.

Microsatellite marker genotyping

In this study, we selected 13 swine microsatellite markers to analyze the genetic polymorphisms of the two pig populations (Table 1). Among 13 markers, 10 markers were recommended by ISAG/FAO (2011) and 3 markers, i.e., S0225, SW951 and SW787, which were recommended by Roslin Institute (University of Edinburg, UK) for pig genetic diversity studies. Also, these markers were previously used for individual identification and parentage analysis in commercial pigs in Korea (Lim et al., 2009). Polymerase chain reaction (PCR) was performed in 15 μ L

Table 1. List of microsatellite markers used in this study

Locus	Chromosome	Dye	Size range (bp)
S0155	1	NED	145-168
SW72	3	NED	95-134
S0005	5	VIC	200-257
SW122	6	VIC	116-138
SW632	7	PET	151-190
S0225	8	NED	172-200
SW951	10	FAM	123-145
S0090	12	FAM	200-260
SW857	14	VIC	142-168
SW936	15	FAM	80-120
S0026	16	VIC	90-113
SW24	17	PET	91-129
SW787	18	FAM	150-180

volume containing of 1 μ L of 100 ng of genomic DNA, 0.5 μ L of 10 pmole of each primer, 1.5 μ L of 10 \times PCR buffer (10 mM Tris-HCl, 50 mM KCl, 1.5 mM MgCl₂, pH 8.3), 1.5 μ L dNTP (2.5 mM), and 0.2 μ L Taq polymerase (10 unit/ μ L) (GENETBio, Daejeon, Korea). Thermal cycling conditions in GeneAmp PCR System 9700 (ABI thermal cycler, Foster city, CA, USA.) included an initial denaturation for 5 min at 94°C, followed by 35 cycles of 30 s at 94°C, 30 s at the annealing temperature, 1 min at 72°C, and a final extension step of 10 min at 72°C. The amplified products were visualized on 2% agarose gels stained with ethidium bromide (0.5 μ g/mL). Genotyping was performed on ABI 3130 Genetic Analyzer (Applied Biosystems, Foster city, CA, USA).

Statistical analyses

The number of alleles, observed heterozygosity (H_{Ob}), expected total heterozygosity (H_{Ex}), and polymorphic information content (PIC) were calculated using MS toolkit software (Park, 2000). Pairwise F_{ST} and inbreeding coefficients (F_{IS} and F_{IT}) were calculated using the program FSTAT (Goudet, 2001). The clustering method (Saitou and Nei, 1987) was used to construct a phylogenetic tree based on the genetic distance matrix in Phylip package version 3.67 (Felsenstein, 2007). To assign individuals to populations using genotype data, a Bayesian approach was used in the program structure (Pritchard et al., 2000). The expected probability of identity (PI) value among genotypes of random individuals was calculated using API-CALC version ver 1.0 (Ayres and Overall, 2004).

RESULTS AND DISCUSSION

Genetic diversity of the two black pig populations

We genotyped 1,151 black pig samples, 800 Jeju black pigs (J) and 351 Berkshires (B), with 13 MS markers. These markers were recommended by ISAG for both breed and

Table 2. Number of samples, mean number of alleles (MNA) per locus, expected heterozygosity (H_{Ex}) at Hardy-Weinberg equilibrium, observed heterozygosity (H_{Ob}), polymorphism information content (PIC) and inbreeding coefficient (F_{IS}) of the two black pig populations

Population	No. of samples	MNA	H_{Ex}	H_{Ob}	PIC	F_{IS}
J	800	8.23	0.706	0.681	0.668	0.030
B	351	5.08	0.541	0.544	0.486	-0.005

J, Jeju black pigs; B, Berkshire.

individual identification in pigs. Furthermore, the markers have been validated by a previous study on breed identification and origin tracking for pork meat in Korea (Lim et al., 2009).

The expected H_{Ex} , H_{Ob} , and PIC are important parameters for the selection of markers for pig breed identification. In general, mean number of alleles per locus (MNA), heterozygosities (H_{Ex} and H_{Ob}), and PIC value of population J were higher than those of population B (Table 2). The MNA of population J and B was 8.23 and 5.08, respectively. H_{Ex} of population J was 0.706, whereas that of population B was 0.541. Population J showed a higher PIC value than population B (0.668 vs 0.486).

Genetic markers for identification of breed need to have sufficient genetic diversity and power. A previous study has indicated that for successful individual identification, PIC and H_{Ex} values need to be higher than 0.5 and 0.6, respectively (Botstein et al., 1980).

H_{Ex} of the two pig populations combined ranged from 0.416 (S0225) to 0.855 (S005), and PIC value ranged from 0.338 (S0225) to 0.840 (S005) for individual markers. Mean H_{Ex} and PIC were 0.688 and 0.650, respectively (Table 3). A few markers, S0225, SW951, SW026, appeared to be less polymorphic than others. On the contrary, some markers, such as S005, SW857, SW122, and SW632, showed higher genetic diversity and information making

them especially useful for traceability tests. In population J, H_{Ex} values ranged from 0.484 (SW951) to 0.884 (S005), while in population B, they ranged from 0.146 (SW0225) to 0.772 (SW24) (Table 4). The highest PIC value was seen in marker S005 (0.873) for population J, while for population B, it was marker SW24 (0.743) (Table 4). Marker S0225 showed the lowest PIC value for both population J and B with 0.447 and 0.136, respectively. These analyses demonstrated that 10 out of 13 MS markers tested may provide a reasonable amount of genetic diversity and information to be suitable for use in breed identification.

Analyses of Wright's F -statistics were carried out using FASTA (version 2.9.3) and the results are presented in Table 3. The global heterozygosity deficit between two black pig populations was estimated by F_{IT} using the 13 MS markers. The mean F_{IT} and F_{ST} among the markers were 0.126 and 0.194, respectively. F_{IT} value was the highest for SW122 (0.191), while it was the lowest for SW0026 (0.022). F_{ST} value of SW122 was the highest (0.175) and that of SW0026 was the lowest (0.026) (Table 3).

The inbreeding coefficient, F_{IS} , reflects the degree of inbreeding in a population by measuring the loss of heterozygosity within a population. F_{IS} ranged from -0.054 (SW857) to 0.120 (S0005) and the mean F_{IS} of the 13 markers was 0.025 (Table 3). Table 4 shows the F_{IS} values for population J (0.03) and population B (0.005), which

Table 3. Measures of genetic diversity for the 13 microsatellite markers

Locus	H_{Ex}	H_{Ob}	PIC	F_{IT}	F_{ST}	F_{IS}
S0155	0.681	0.690	0.649	0.027	0.068	-0.044
SW72	0.662	0.597	0.609	0.129	0.059	0.075
S0005	0.855	0.736	0.840	0.165	0.051	0.120
SW122	0.792	0.713	0.760	0.191	0.175	0.019
SW632	0.793	0.763	0.760	0.090	0.093	-0.002
S0225	0.416	0.402	0.382	0.105	0.129	-0.027
SW951	0.474	0.425	0.448	0.139	0.068	0.076
S0090	0.731	0.676	0.684	0.167	0.161	0.006
SW857	0.748	0.716	0.701	0.151	0.194	-0.054
SW936	0.706	0.670	0.655	0.087	0.065	0.024
S0026	0.578	0.573	0.520	0.022	0.026	-0.003
SW24	0.816	0.710	0.792	0.153	0.046	0.112
SW787	0.694	0.650	0.652	0.155	0.169	-0.017
Mean	0.688	0.640	0.650	0.126	0.103	0.025

H_{Ex} , expected heterozygosity; H_{Ob} , observed heterozygosity; PIC, polymorphism information content; F_{IT} , measures of the deviation from Hardy-Weinberg in the total population; F_{ST} , measures of the genetic differentiation over subpopulations; F_{IS} , measures of the deviation from Hardy-Weinberg proportions within subpopulations.

populations share a coat color, they are genetically distinct from each other. We observed that the distance between the branches in population J was greater than that of population B. This suggests that population J should have a greater variation than population B.

We estimated the expected PI values of the 13 MS markers in random individuals in the two black pig populations (Table 5). The expected PI from was 9.87×10^{-14} and 3.17×10^{-9} for population J and population B, respectively. Kim et al. (2007) reported that analysis among 4 pig breeds (Duroc, Landrace, Yorkshire and Korean native pig) with 10 MS markers resulted in an expected probability of identify value of 0.36×10^{-9} . In our study, the expected probability of identify value was estimated to be 3.87×10^{-11} with 10 markers. In another study of 400 pigs with a three-way cross (Landrace \times Large White \times Duroc), the expected probability of identify value was estimated to be 2.47×10^{-18} (Lim et al., 2009). Therefore, the results of this study are reliable when compared to previous studies. In summary, the expected PI value was 1.03×10^{-12} with 13 MS markers in 1,151 black pigs (Table 5).

The result of the structure analysis when $K = 2$ is shown in Figure 2. Each breed grouped into its own cluster; however, there were signs of gene flow from population B into population J. The possibility of cross breeding between the two populations is supported by the breeding history (Moon, 2004).

CONCLUSION

In this study, we analyzed 1,151 muscle samples from two black pig populations with 13 MS markers. The chosen MS markers' ability to identify the breed of the meat was analyzed by estimating the genetic diversity and population structure of the two populations. While the two breeds are difficult to differentiate phenotypically due to the same coat color, we found that 10 out of 13 MS markers can be used to genetically distinguish between the two breeds.

These markers can also be used to complement the

Table 5. The expected PI values among genotypes of random individuals for discriminating between the two pig populations

No. of markers	J	B	Total
M1	2.11×10^{-2}	7.56×10^{-2}	3.25×10^{-2}
M2	1.15×10^{-3}	7.13×10^{-3}	1.84×10^{-3}
M3	7.03×10^{-5}	8.10×10^{-4}	1.31×10^{-4}
M4	5.11×10^{-6}	1.02×10^{-4}	9.59×10^{-6}
M5	4.07×10^{-7}	1.94×10^{-5}	9.08×10^{-7}
M6	3.96×10^{-8}	4.03×10^{-6}	9.96×10^{-8}
M7	4.11×10^{-9}	8.49×10^{-7}	1.35×10^{-8}
M8	4.38×10^{-10}	2.42×10^{-7}	1.83×10^{-9}
M9	4.87×10^{-11}	6.10×10^{-8}	2.32×10^{-10}
M10	7.56×10^{-12}	1.99×10^{-8}	3.87×10^{-11}
M11	1.39×10^{-12}	9.63×10^{-9}	8.95×10^{-12}
M12	3.71×10^{-13}	4.43×10^{-9}	2.77×10^{-12}
M13	9.87×10^{-14}	3.17×10^{-9}	1.03×10^{-12}

PI, probability of identity; J, Jeju black pigs; B, Berkshire.

conventional traceability system based on meat cut labeling. A genetic traceability system will be useful for identifying black pig meat products in the market to prevent fraud and mislabeling. However, trade-off between economic viability and sufficient identification power need to be considered for the selection of a subset of MS markers for a practical traceability system.

ACKNOWLEDGMENTS

This study was supported by a grant from the Next Generation BioGeen 21 program (No. PJ008196, PJ009032), Rural Development Administration, Republic of Korea.

REFERENCES

- Alves, E., A. I. Fernández, A. Fernández-Rodríguez, D. Pérez-Montarelo, R. Benitez, C. Ovilo, C. Rodríguez, and L. Silió. 2009. Identification of mitochondrial markers for genetic traceability of European wild boars and Iberian and Duroc pigs.

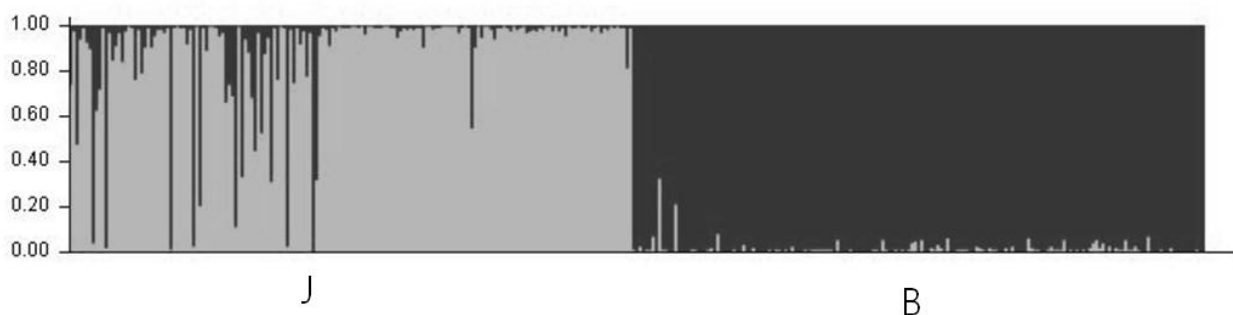


Figure 2. Clustering assignment of the two pig populations obtained by structure analyses. Each of the 400 animals is represented by a thin vertical line that is divided into segments whose size and color correspond to the relative proportion of the animal genome corresponding to a particular cluster. Panel with $K = 2$ inferred clusters, J (Jeju black pigs) and B (Berkshire) populations are discriminated.

- Animal 3:1216-1223.
- Ayres, K. L. and A. D. J. Overall. 2004. API-CALC 1.0: a computer program for calculating the average probability of identity allowing for substructure, inbreeding and the presence of close relatives. *Mol. Ecol. Notes.* 4:315-318.
- Botstein, D., R. L. White, M. Skolnik, and R. W. Davis. 1980. Construction of a genetic linkage map in man using restriction fragment length polymorphisms. *Am. J. Hum. Genet.* 32:314-331.
- Cameron, N. D. 1990. Genetic and phenotypic parameters for carcass traits, meat and eating quality traits in pigs. *Livest. Prod. Sci.* 26:119-135.
- Ciplef, R. L. and R. M. McKay. 1993. Carcass quality characteristics of swine selected for reduced backfat thickness and increased growth rate. *Can. J. Anim. Sci.* 73:483-494.
- Dalvit, C., M. De Marchi, and M. Cassandro. 2007. Genetic traceability of livestock products: A review. *Meat Sci.* 77:437-449.
- Dalvit, C., M. De Marchi, C. Targhetta, M. Geravaso, and M. Cassandro. 2008. Genetic traceability of meat using microsatellite markers. *Food Res. Int.* 41:301-307.
- Felsenstein, J. 2007. PHYLIP - Phylogeny Inference Package. Version 3.67. Department of Genetics, University of Washington, Seattle.
- Goffaux, F., B. China, L. Dams, A. Clinquart, and G. Daube. 2005. Development of a genetic traceability test in pig based on single nucleotide polymorphism detection. *Forensic Sci. Int.* 151:239-247.
- Goudet, J. 2001. FSTAT, a program to estimate and test gene diversities and fixation indices (version 2.9.3). <http://www.unil.ch/izea/software/fstat.html>. Accessed February 6, 2005.
- Kim, M. J., G. H. Li, J. D. Oh, K. H. Cho, G. J. Jeon, B. H. Choi, J. H. Lee, Y. S. Hong, H. S. Kong, and H. K. Lee. 2007. Characterization of a Korean traditional porcine breed using microsatellite markers and the establishment of an individual identification system. *Korean J. Food Sci. Anim. Resour.* 27:150-156.
- Kim, T. H., K. S. Kim, B. H. Choi, D. H. Yoon, G. W. Jang, K. T. Lee, H. Y. Chung, H. Y. Lee, H. S. Park, and J. W. Lee. 2005. Genetic structure of pig breeds from Korea and China using microsatellite loci analysis. *J. Anim. Sci.* 83:2255-2263.
- Lee, Y. H., S. G. Kwon, D. H. Park, E. J. Kwon, E. S. Cho, W. Y. Bang, H. C. Park, B. Y. Park, J. S. Choi, and C. W. Kim. 2011. Development of high meat quality using microsatellite markers in Berkshire pigs. *J. Anim. Sci. Technol.* 53:89-97.
- Lim, H. T., H. S. Min, W. G. Moon, J. B. Lee, J. H. Kim, I. C. Cho, H. K. Lee, Y. W. Lee, J. G. Lee, and J. T. Jeon. 2005. Analysis and selection of microsatellites markers for individual traceability system in hanwoo. *J. Anim. Sci. Technol.* 47:491-500.
- Lim, H. T., B. Y. Seo, E. J. Jung, C. K. Yoo, T. Zhong, I. C. Cho, D. H. Yoon, J. G. Lee, and J. T. Jeon. 2009. Establishment of a microsatellite marker set for individual, pork brand and product origin identification in pigs. *J. Anim. Sci. Technol.* 51:201-206.
- Miller, S. A., D. D. Dykes, and H. F. Polesky. 1988. A simple salting out procedure for extracting DNA from human nucleated cells. *Nucleic Acids Res.* 16:1215.
- Moon, Y. H. 2004. Physicochemical properties and palatability of Loin from crossbred Jeju Black pigs. *Korean J. Food Sci. Anim. Resour.* 24:238-245.
- Negrini, R., L. Nicoloso, P. Crepaldi, E. Milanese, R. Marino, D. Perini, L. Pariset, S. Dunner, H. Leveziel, J. L. Williams, and M. P. Ajmone. 2008. Traceability of four European protected geographic indication (PGI) beef products using single nucleotide polymorphisms (SNP) and Bayesian statistics. *Meat Sci.* 80:1212-1217.
- Nei, M., F. Tajima, and Y. Tateno. 1983. Accuracy of estimated phylogenetic trees from molecular data. *J. Mol. Evol.* 19:153-170.
- Park, S. 2000. Microsatellite Toolkit For MS Excel 97 or 2000 (personnel communication).
- Pritchard, J. K., M. Stephens, and P. Donnelly. 2000. Inference of population structure using multilocus genotype data. *Genetics* 155:945-959.
- Saitou, N. and M. Nei. 1987. The neighbor-joining method: a new method for reconstructing phylogenetic trees. *Mol. Biol. Evol.* 4:406-425.
- Shim, J. M., D. W. Seo, S. Seo, J. J. Kim, D. M. Min, J. K. Kim, J. T. Jeon, and J. H. Lee. 2010. Discrimination of Korean cattle (Hanwoo) with imported beef from USA based on the SNP markers. *Korean J. Food Sci. Anim. Resour.* 30:918-922.
- Song, J. Y. 2010. Comparative Analysis of Meat Quality According to Pig Breed and Carcass Chilling Rate in Jeju Pork. MS Thesis, Jeju University, Jeju, Korea.
- Suzuki, K., T. Shibata, H. Kadowaki, H. Abe, and T. Toyoshima. 2003. Meat quality comparison of Berkshire, Duroc and crossbred pigs sired by Berkshire and Duroc. *Meat Sci.* 64:35-42.
- Wright, S. 1965. The interpretation of population structure by f-statistics with special regard to systems of mating. *Evolution* 19:395-420.