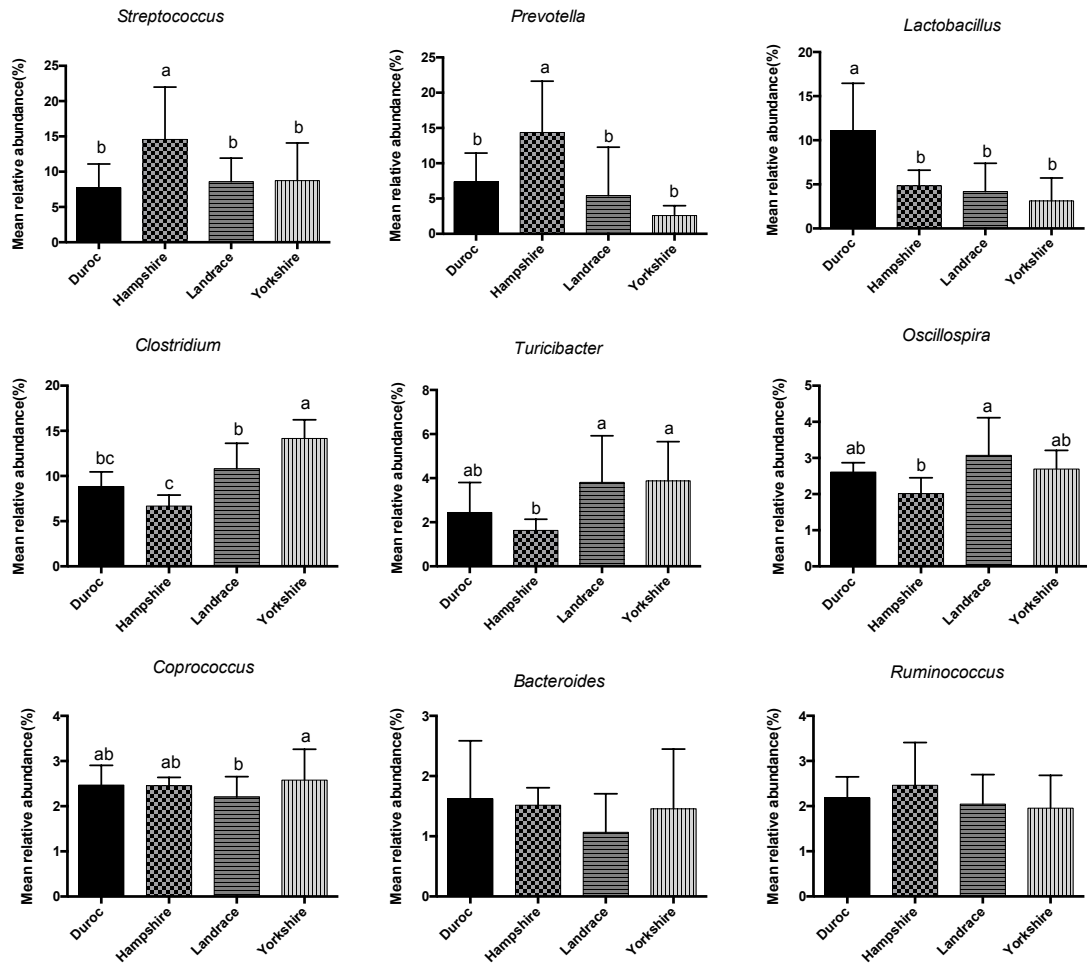
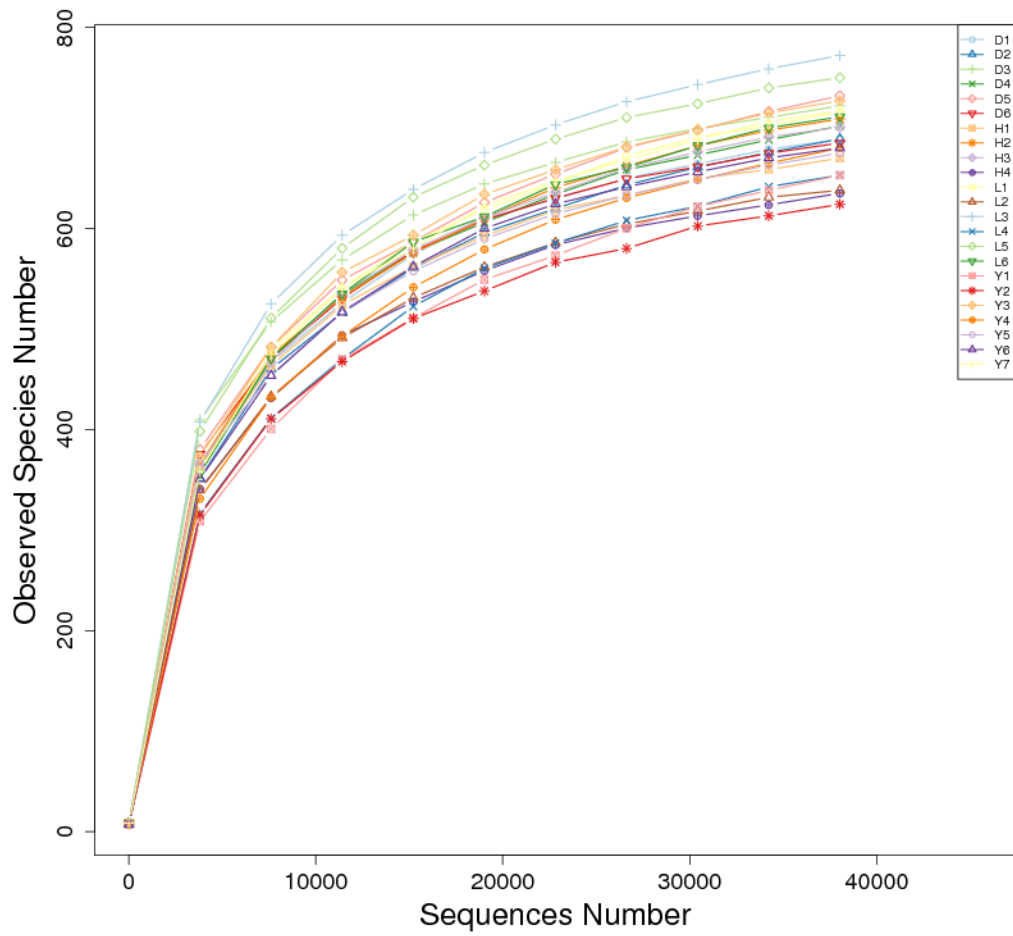


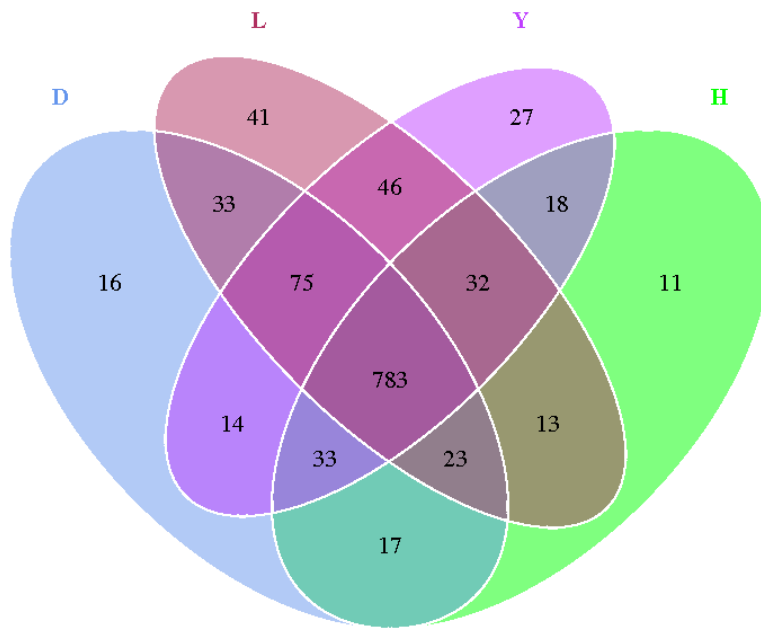
Supplementary Figure 1. Distribution of bacterial classes and their abundance among the fecal microbiota of the four boar pig breeds. D: Duroc; H: Hampshire; L: Landrace; Y: Yorkshire.



Supplementary Figure 2. Distribution of bacterial genera and their abundance in the four boar pig breeds. The error bars represent standard deviations.



Supplementary Figure 3. Rarefaction curves of OTU sampling depth. Each curve represents a sample, and the sample name corresponding to each color and symbol is supplied in the mapping file. The sequences number is on the X-axis, and the observed OTUs number is on the Y-axis. If the curve becomes flatter to the right, a reasonable number of individual samples have been taken, indicating that only the rarest species remain to be sampled.



Supplementary Figure 4. Venn diagram of the four breeds. Samples (groups) are represented here as different sets of colored circles, among which the overlapping sections represent the number of shared OTUs and the separate section represent the number of unique OTUs. D: Duroc; H: Hampshire; L: Landrace; Y: Yorkshire.