



Open Access

Asian Australas. J. Anim. Sci.

Vol. 27, No. 4 : 471-478 April 2014

<http://dx.doi.org/10.5713/ajas.2013.13471>

[www.ajas.info](http://www.ajas.info)

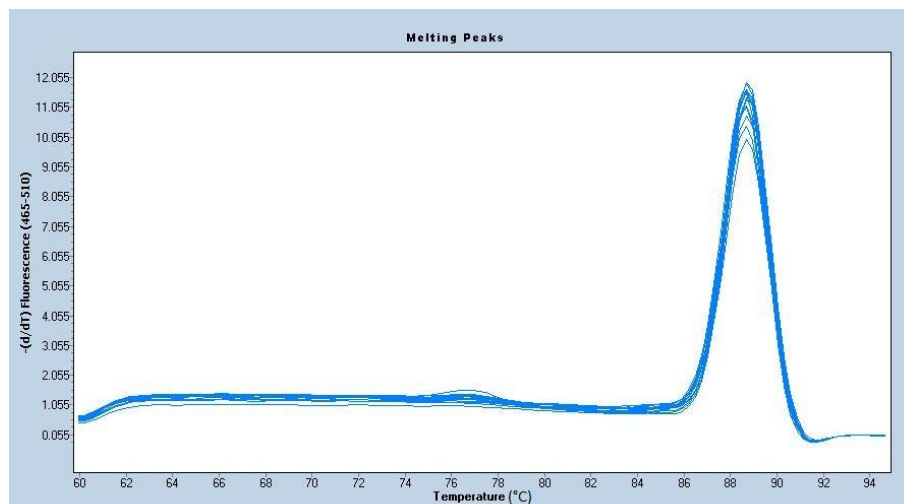
pISSN 1011-2367 eISSN 1976-5517

## Selection of Reference Genes for Gene Expression Studies in Porcine Whole Blood and Peripheral Blood Mononuclear Cells under Polyinosinic:polycytidylic Acid Stimulation

Jiying Wang, Yanping Wang, Huaizhong Wang, Xiaojing Hao<sup>1</sup>, Ying Wu\*, and Jianfeng Guo\*

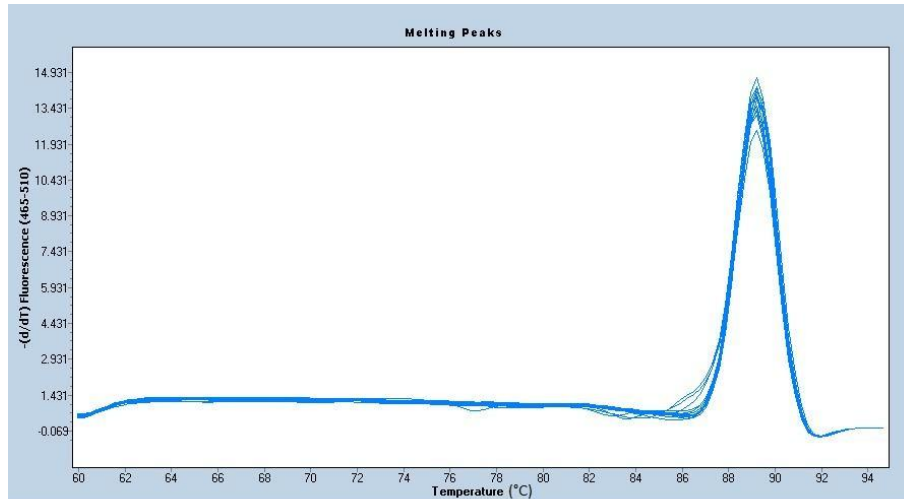
Shandong Provincial Key Laboratory of Animal Disease Control and Breeding,  
Institute of Animal Science and Veterinary Medicine,  
Shandong Academy of Agricultural Sciences, Jinan 250100, China

### - Supplementary Data -

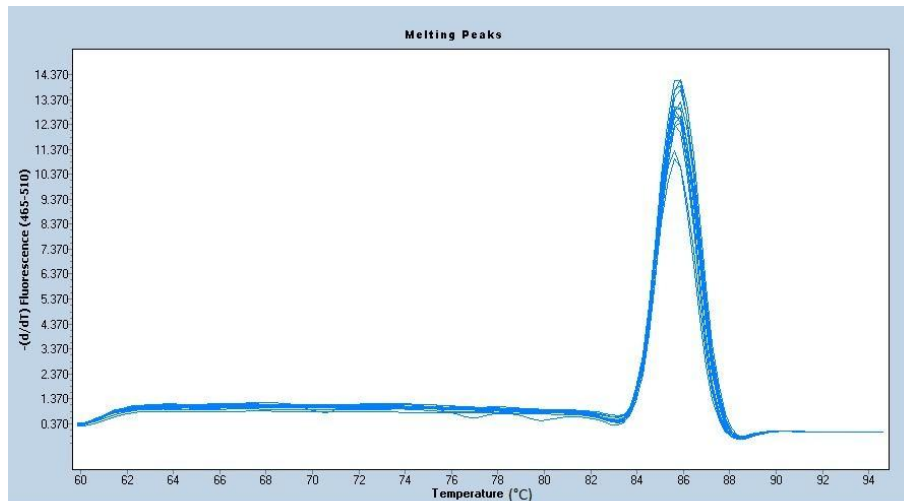


(a)

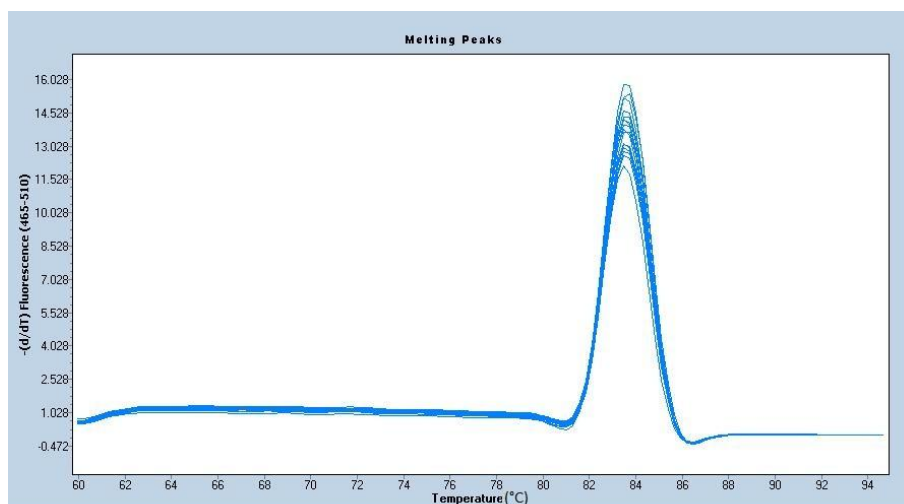
**Supplementary Figure S1. i)** Melting curves for all amplicons of the six candidate reference genes. (a) *ACTB*; (b) *B2M*; (c) *GAPDH*; (d) *PPIA*; (e) *RPL4*; (f) *TBP*.



(b)

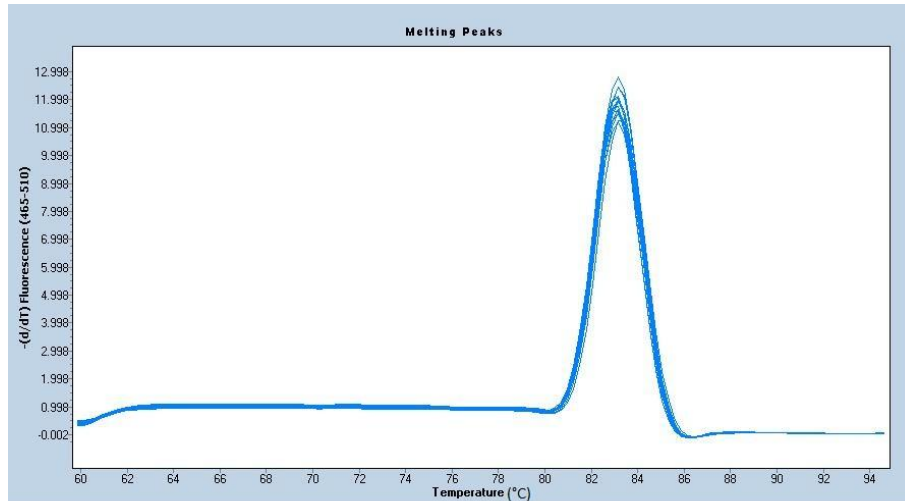


(c)

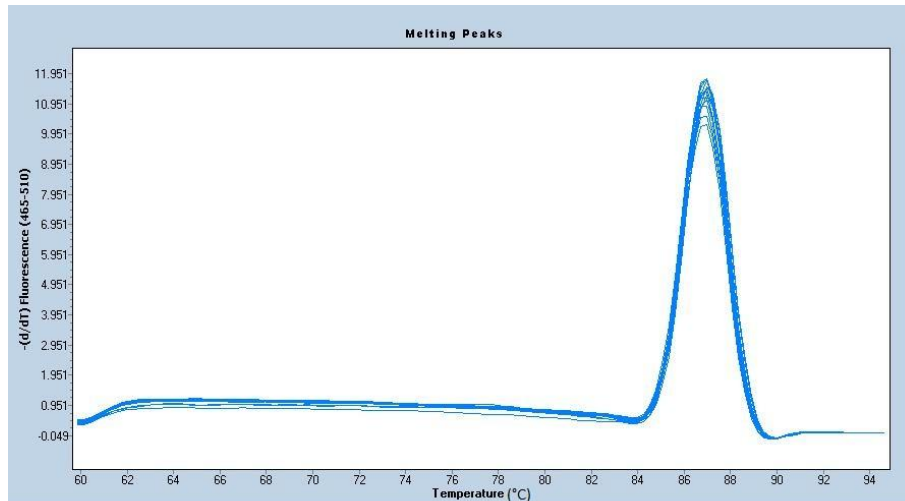


(d)

**Supplementary Figure S1. ii** Melting curves for all amplicons of the six candidate reference genes. (a) *ACTB*; (b) *B2M*; (c) *GAPDH*; (d) *PPIA*; (e) *RPLA*; (f) *TBP*.



(e)



(f)

**Supplementary Figure S1. iii)** Melting curves for all amplicons of the six candidate reference genes. (a) *ACTB*; (b) *B2M*; (c) *GAPDH*; (d) *PPIA*; (e) *RPL4*; (f) *TBP*.