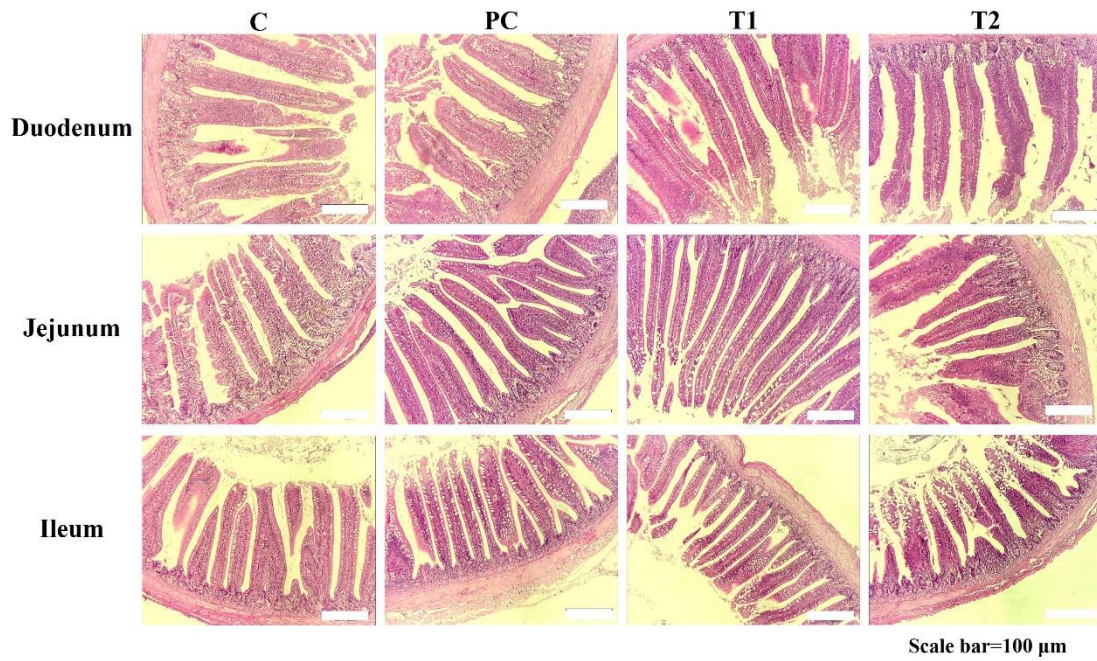


S Figure 1 Effect of *Agaricus blazei* polysaccharide on intestinal morphology of Korean quail (10×, scale bar 200 μm).



C: quails fed basal diets, T1: quails fed basal diet with 0.05% (w/w) *Agaricus blazei* polysaccharide, T2: quails fed basal diet with 0.1% (w/w) *Agaricus blazei* polysaccharide.