

Fig. S3. Electrophoresis of RACE PCR products for lncRNA-ENSGALT00000046546.

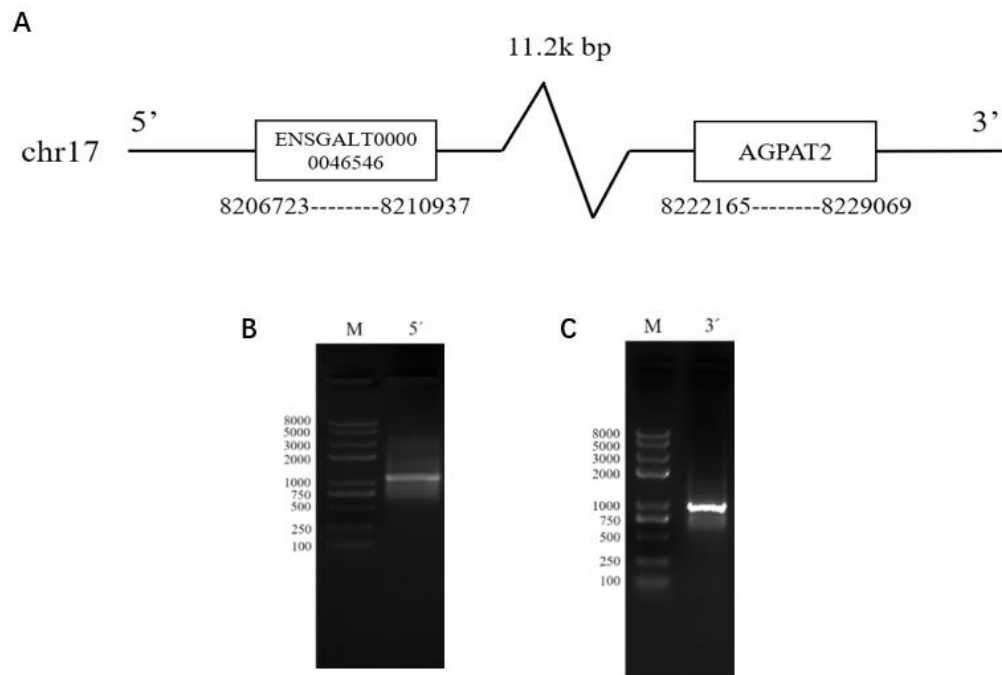


Fig. S3. Electrophoresis of RACE PCR products for lncRNA-ENSGALT00000046546. (A) lncRNA-46546 is located 11.2 k-bp upstream of the *AGPAT2* gene. (B) Electrophoresis of 5' RACE PCR products to identify the 5' portion of lncRNA-46546. (C) Electrophoresis of 3' RACE PCR products to identify the 3' portion of lncRNA-46546.